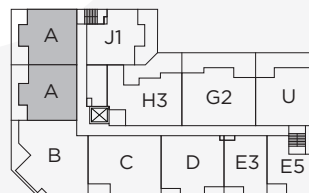
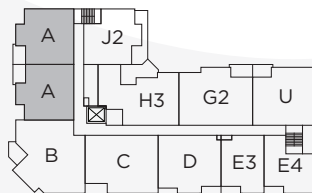
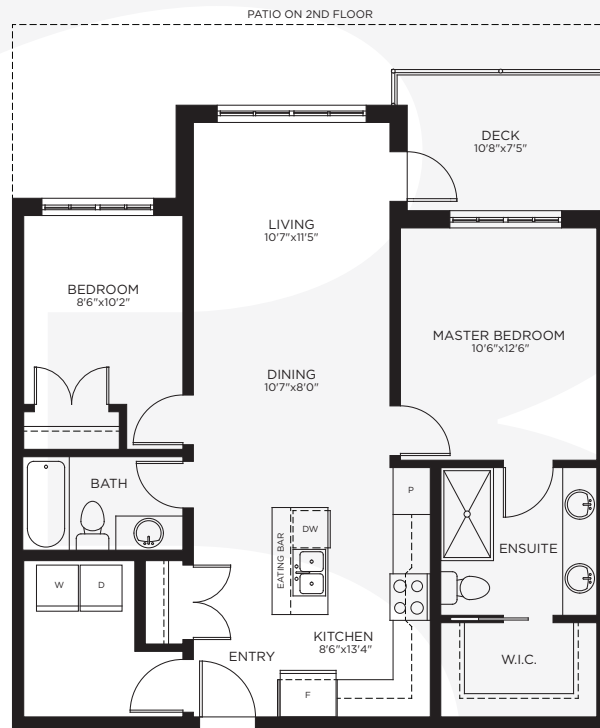


BRICKWATER

Downtown Living in the Heart of Maple Ridge



PLAN A

2 BED, 2 BATH 947 SF

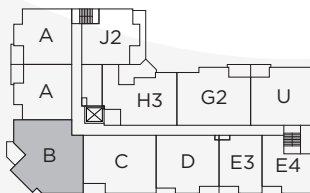


In our continuing effort to improve and maintain the high standards of Brickwater, the developer reserves the right to modify or change plans, specifications, features and prices without notice. Dimensions and sizes are approximate and are based on architectural measurements. E&OE.

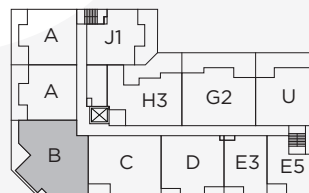


BRICKWATER

Downtown Living in the Heart of Maple Ridge



3rd - 5th Floors



2nd Floor



NORTH

PLAN B

3 BED, 2 BATH 1,467 SF

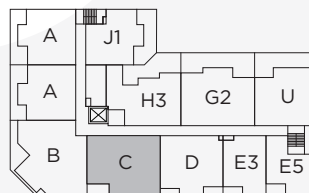
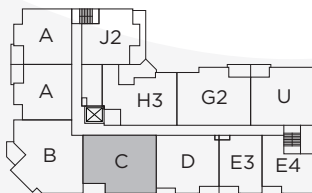
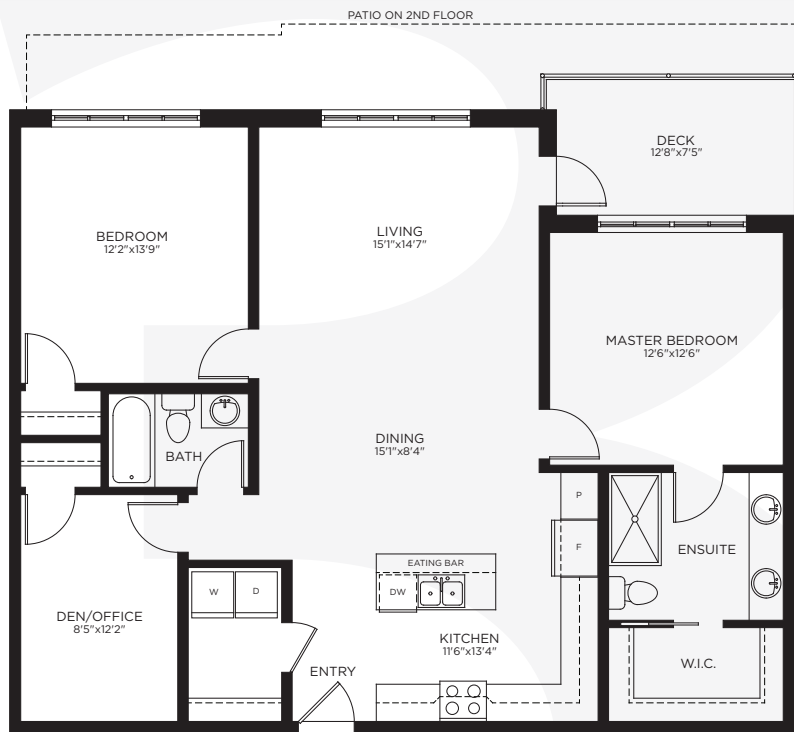


In our continuing effort to improve and maintain the high standards of Brickwater, the developer reserves the right to modify or change plans, specifications, features and prices without notice. Dimensions and sizes are approximate and are based on architectural measurements. E&OE.



BRICKWATER

Downtown Living in the Heart of Maple Ridge



NORTH

PLAN C

2 BED + DEN, 2 BATH 1,328 SF

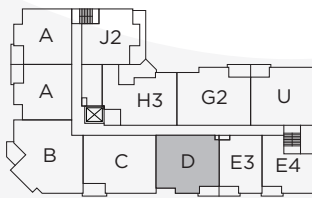
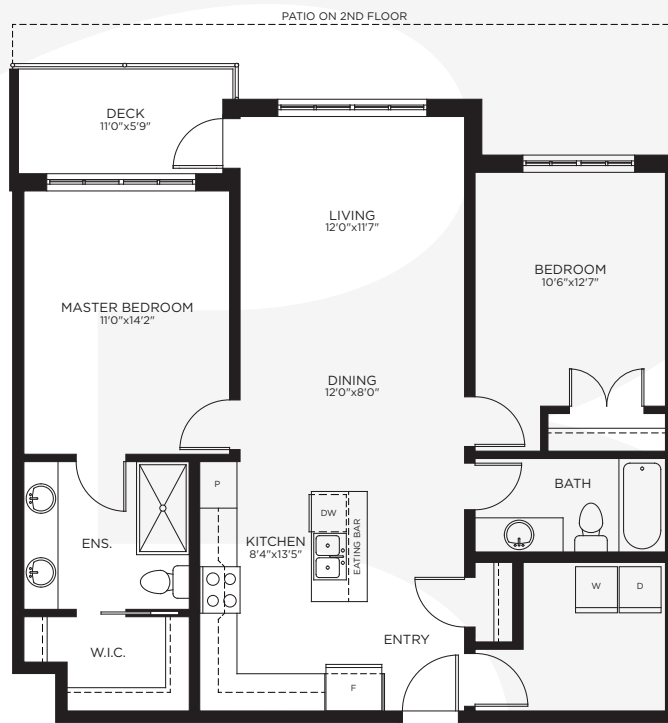


In our continuing effort to improve and maintain the high standards of Brickwater, the developer reserves the right to modify or change plans, specifications, features and prices without notice. Dimensions and sizes are approximate and are based on architectural measurements. E&OE.

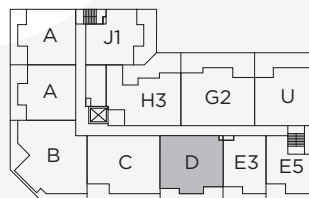


BRICKWATER

Downtown Living in the Heart of Maple Ridge



3rd - 5th Floors



2nd Floor



PLAN D 2 BED, 2 BATH 1,102 SF

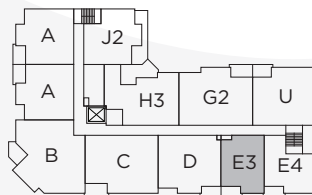
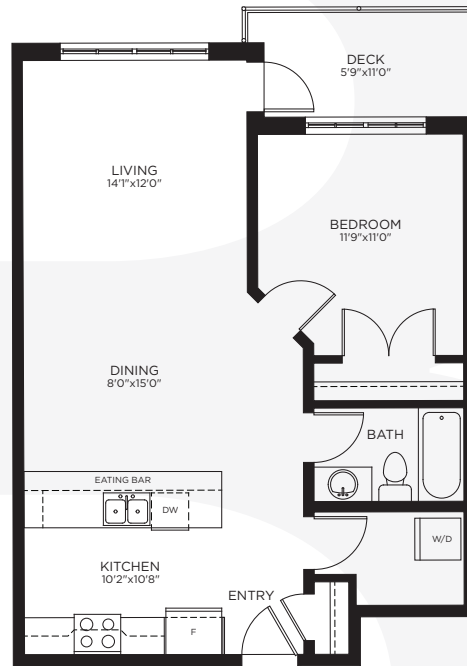


In our continuing effort to improve and maintain the high standards of Brickwater, the developer reserves the right to modify or change plans, specifications, features and prices without notice. Dimensions and sizes are approximate and are based on architectural measurements. E&OE.

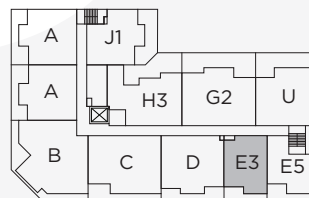


BRICKWATER

Downtown Living in the Heart of Maple Ridge



3rd - 5th Floors



2nd Floor



NORTH

PLAN E3 1 BED, 1 BATH 756 SF

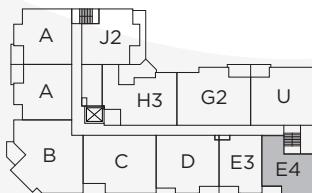
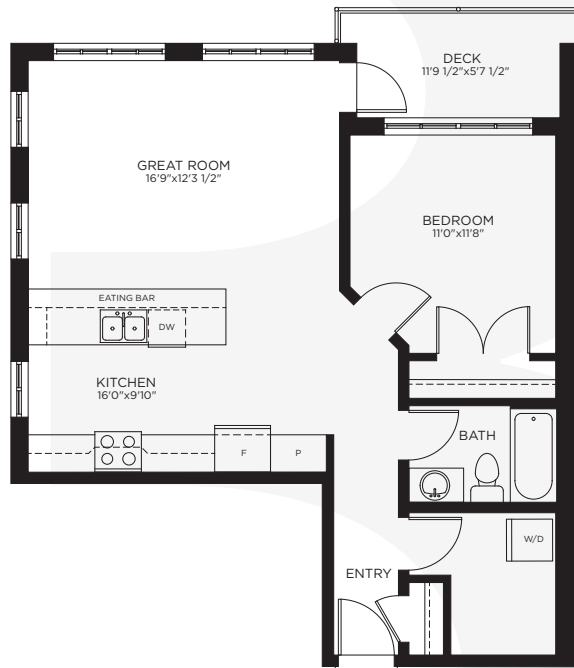
THE VILLAGE

In our continuing effort to improve and maintain the high standards of Brickwater, the developer reserves the right to modify or change plans, specifications, features and prices without notice. Dimensions and sizes are approximate and are based on architectural measurements. E&OE.

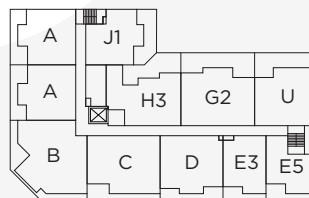
FALCON HOMES

BRICKWATER

Downtown Living in the Heart of Maple Ridge



3rd - 5th Floors



2nd Floor



PLAN E4 1 BED, 1 BATH 765 SF

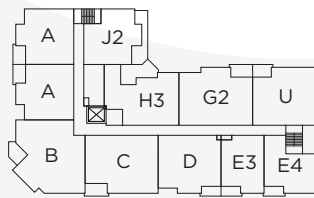
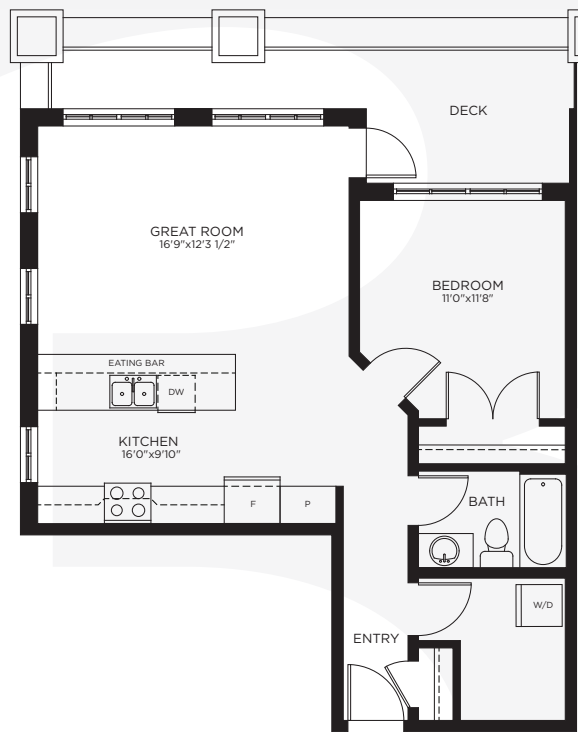


In our continuing effort to improve and maintain the high standards of Brickwater, the developer reserves the right to modify or change plans, specifications, features and prices without notice. Dimensions and sizes are approximate and are based on architectural measurements. E&OE.

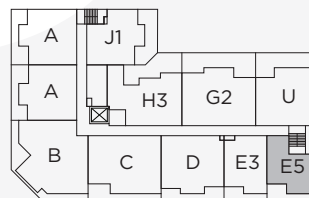


BRICKWATER

Downtown Living in the Heart of Maple Ridge



3rd - 5th Floors



2nd Floor



PLAN E5 1 BED, 1 BATH 759 SF

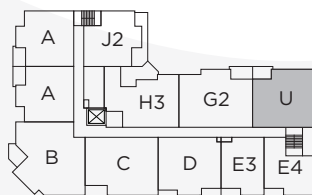
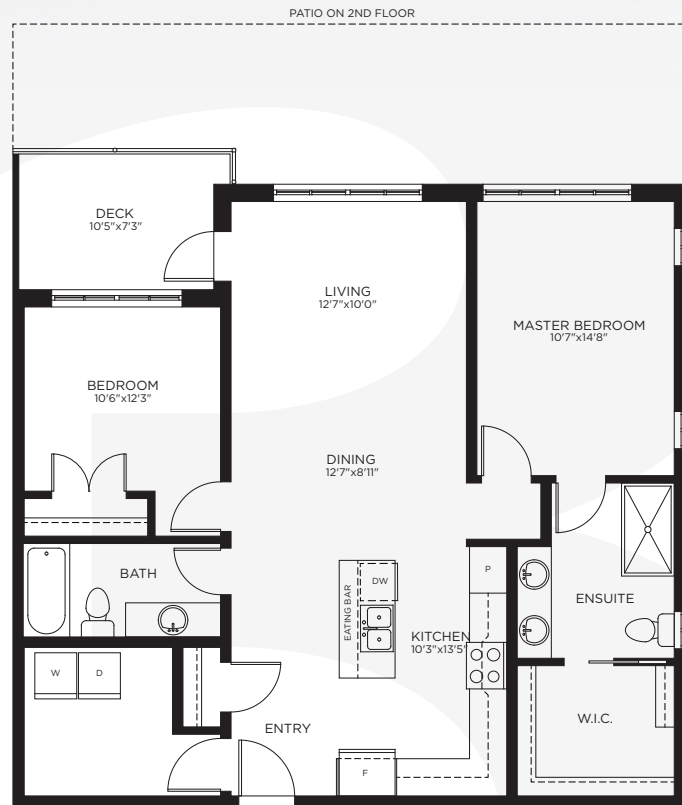


In our continuing effort to improve and maintain the high standards of Brickwater, the developer reserves the right to modify or change plans, specifications, features and prices without notice. Dimensions and sizes are approximate and are based on architectural measurements. E&OE.

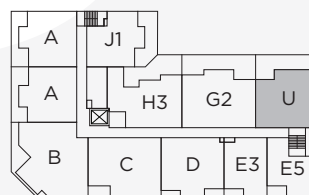


BRICKWATER

Downtown Living in the Heart of Maple Ridge



3rd - 5th Floors



2nd Floor



NORTH

PLAN U 2 BED, 2 BATH 1,128 SF

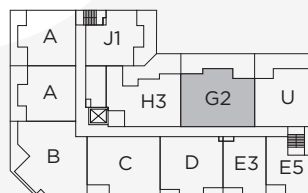
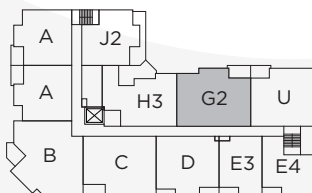
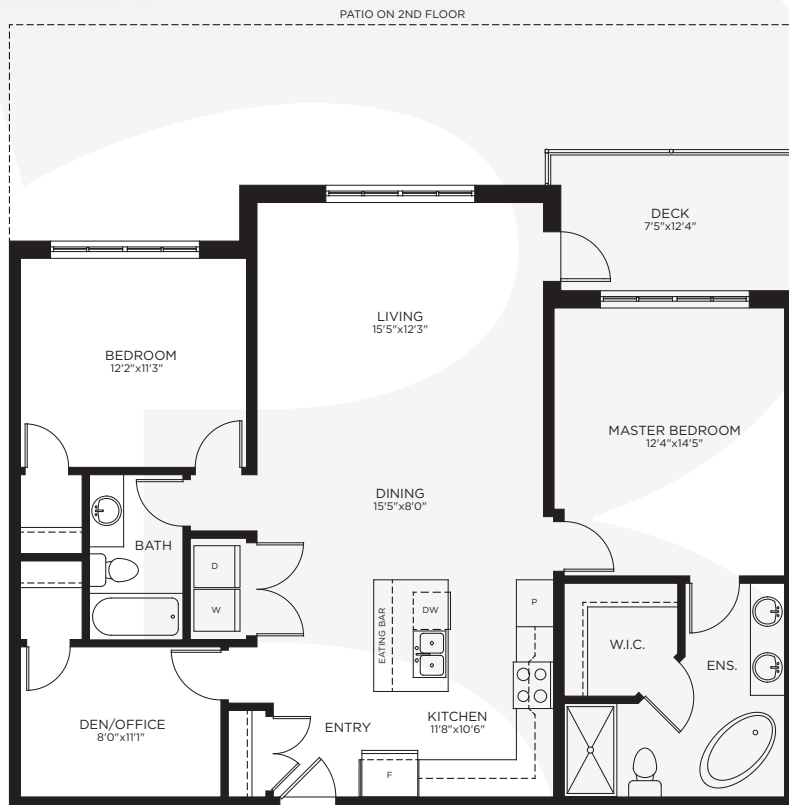


In our continuing effort to improve and maintain the high standards of Brickwater, the developer reserves the right to modify or change plans, specifications, features and prices without notice. Dimensions and sizes are approximate and are based on architectural measurements. E&OE.



BRICKWATER

Downtown Living in the Heart of Maple Ridge



PLAN G2 2 BED + DEN, 2 BATH 1,292 SF

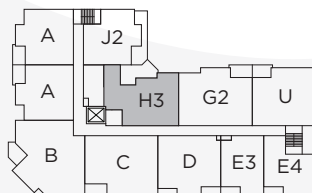


In our continuing effort to improve and maintain the high standards of Brickwater, the developer reserves the right to modify or change plans, specifications, features and prices without notice. Dimensions and sizes are approximate and are based on architectural measurements. E&OE.

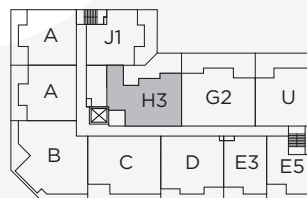


BRICKWATER

Downtown Living in the Heart of Maple Ridge



3rd - 5th Floors



2nd Floor



PLAN H3 3 BED, 2 BATH 1,126 SF

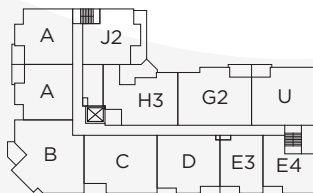
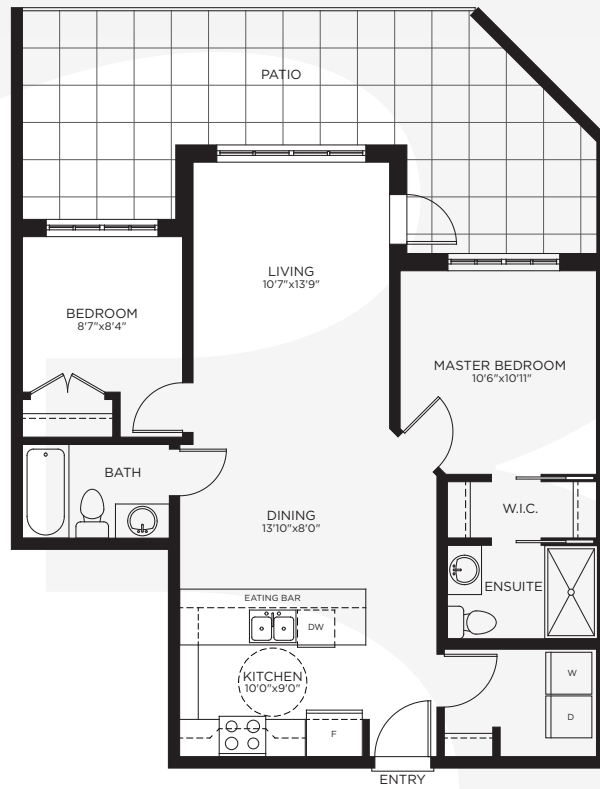
THE VILLAGE

In our continuing effort to improve and maintain the high standards of Brickwater, the developer reserves the right to modify or change plans, specifications, features and prices without notice. Dimensions and sizes are approximate and are based on architectural measurements. E&OE.

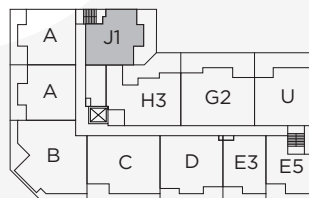
FALCON HOMES

BRICKWATER

Downtown Living in the Heart of Maple Ridge



3rd - 5th Floors



2nd Floor



PLAN J1 2 BED, 2 BATH 854 SF 

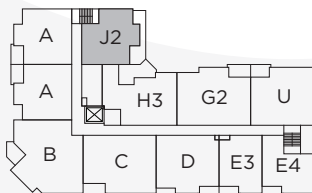
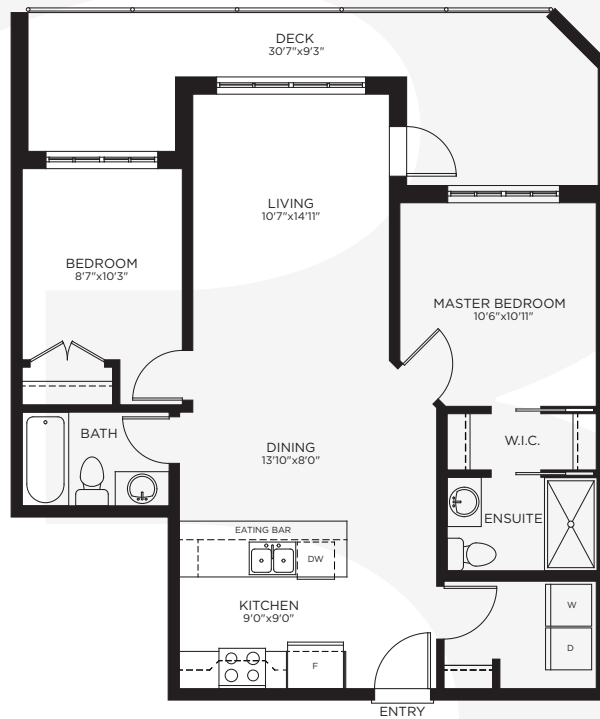
THE VILLAGE

In our continuing effort to improve and maintain the high standards of Brickwater, the developer reserves the right to modify or change plans, specifications, features and prices without notice. Dimensions and sizes are approximate and are based on architectural measurements. E&OE.

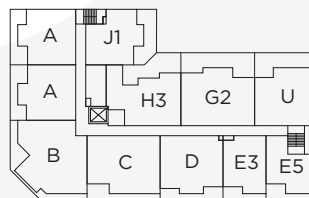
FALCON HOMES

BRICKWATER

Downtown Living in the Heart of Maple Ridge



3rd - 5th Floors



2nd Floor



*Rental Unit on 3rd and 4th Floors
Sale Unit on 5th Floor

PLAN J2 2 BED, 2 BATH 871 SF

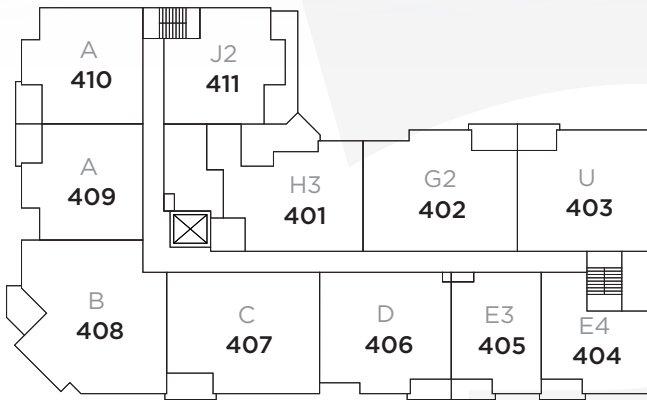


In our continuing effort to improve and maintain the high standards of Brickwater, the developer reserves the right to modify or change plans, specifications, features and prices without notice. Dimensions and sizes are approximate and are based on architectural measurements. E&OE.

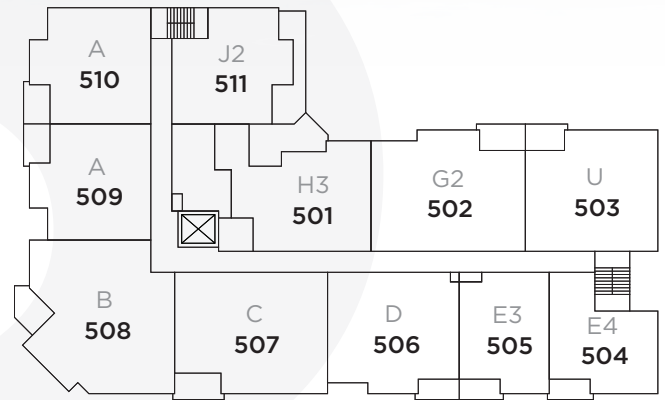


BRICKWATER

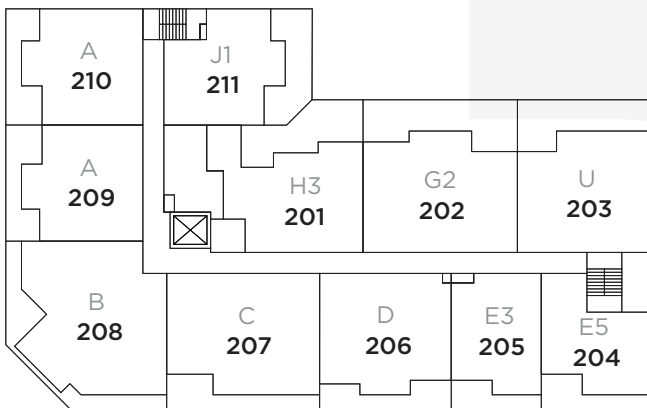
Downtown Living in the Heart of Maple Ridge



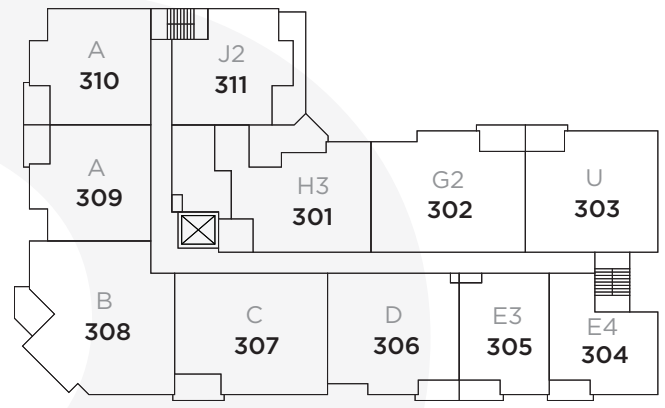
4th Floor



5th Floor



2nd Floor



3rd Floor

FLOOR PLATES



In our continuing effort to improve and maintain the high standards of Brickwater, the developer reserves the right to modify or change plans, specifications, features and prices without notice. Dimensions and sizes are approximate and are based on architectural measurements. E&OE.

