

BRICKWATER

Downtown Living in the Heart of Maple Ridge

FEATURES

Thoughtful Design

- Traditional design with heritage red brick finishing reminiscent of classic European style
- Protective rain screen technology for your peace of mind
- Over-sized, smartglass Low-E glazed windows provide natural light to all levels
- Falcon Homes designed floor plans to maximize interior and exterior living space
- Comfortably sized, partially covered, balconies to enjoy the views and entertain during any season
- Suites designed to maximize views
- Select tandem parking spots available*
- Select units available with "Age In Place" adaptability
- Individual storage lockers with select parking stalls*

Exceptional Interiors

- 9'-0" ceilings on all floors with drops limited to required venting locations
- 6th floor raised ceilings where possible for added natural light
- Extra wide distressed look vinyl plank flooring in entry, dining and living rooms with acoustic underlay
- Premium carpet with upgraded underlay in bedrooms and closets
- Optional engineered hardwood upgrade*
- Solid shelving closet organizers in all closets
- Roller shades on all windows and balcony doors

Gourmet Kitchens

- Premium stainless steel appliance package featuring gas range and counter depth French door fridge with filtered water & ice dispenser and bottom mount freezer
- Purchaser's choice from shaker or slab cabinets
- Soft close hardware and contemporary metal pulls
- Undermount double bowl stainless steel sink and durable quartz countertops
- Delta - stylish single lever faucet with pull out extension spray
- Modern pendant lighting at island breakfast bar
- Under cabinet puck lighting
- Full height ceramic tile backsplash
- Recycle cabinet with two bin insert in select kitchen layouts
- Pantry cupboards for greater storage in select units

Luxurious Bathrooms

- Quality Riobel single lever faucets
- Free standing soaker tubs in "L" plans
- Oversized shower with ceramic tile surround and frameless glass doors
- Luxury styled zero-threshold showers in ensuite
- Hand held shower head
- Purchaser's choice from shaker or slab cabinets
- Soft close hardware and contemporary metal pulls
- Quartz countertop with undermount sink
- Full width mirrors with designer lighting in main bathrooms
- Full width mirrors with integrated medicine cabinet in ensuites for added storage
- Comfort height toilets with soft close seat and lid

For Your Peace of Mind & Convenience

- Full size front loading high efficiency washer and dryer
- Concrete topping on floors and resilient channeling on ceiling for limited noise transfer
- Wall assembly with additional sound proofing between suites
- Convenient and secure enter phone access with security camera feature
- Security cameras throughout building and parkades
- Keyless entry FOB's
- Rough in for in-suite security system
- Sprinkler system throughout the building
- Secure anodized lockset and peephole on all front doors
- Ductless-split air conditioning/heating in all units
- Designer hallway and lighting features
- ChargePoint EV charging stations for residents' use *Usage fees will apply

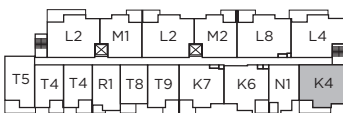
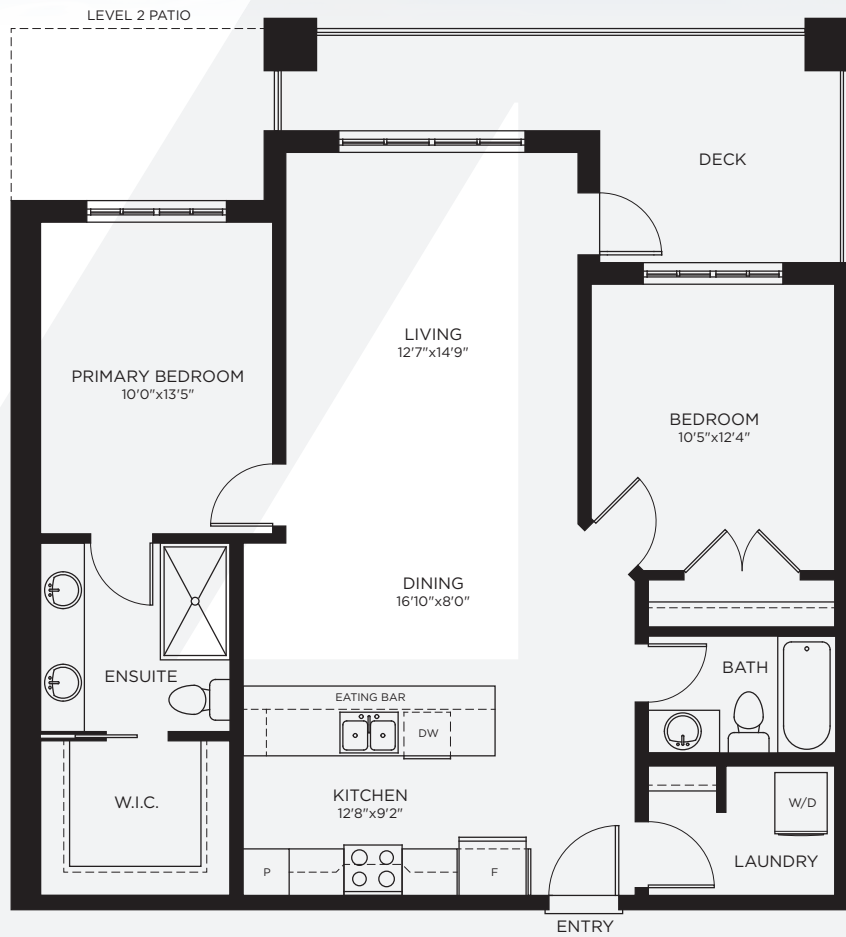
Amenities

- Situated on Selkirk Avenue between 226 and 227th Street in the heart of Maple Ridge
- Developing commercial spaces on ground floor
- "The Village" featuring pedestrian and bike friendly landscaped courtyard
- Walking distance to all downtown Maple Ridge shops and services
- Roof top patio for owners' exclusive use
- Easy access to bus loop and transit connecting you to other communities

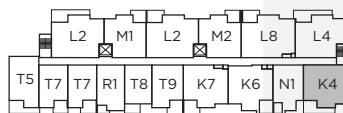
* Time sensitive option.
Please see sales staff for more information.

BRICKWATER

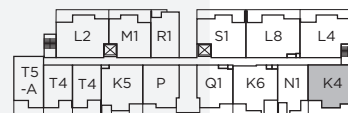
Downtown Living in the Heart of Maple Ridge



4TH - 6TH FLOORS



3RD FLOOR



2ND FLOOR



NORTH

PLAN K4 2 BED, 2 BATH 1,069 SF

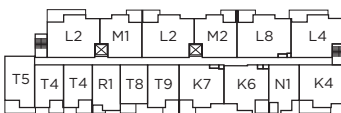
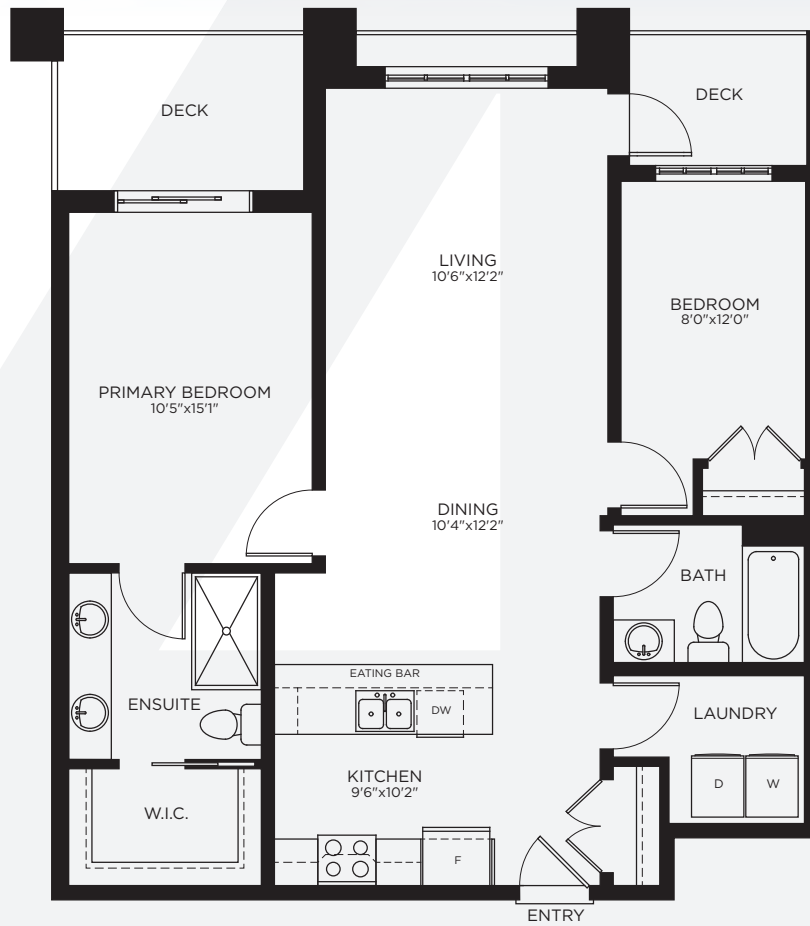


In our continuing effort to improve and maintain the high standards of Brickwater, the developer reserves the right to modify or change plans, specifications, features and prices without notice. Dimensions and sizes are approximate and are based on architectural measurements. E&OE.

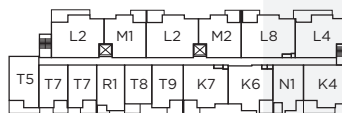


BRICKWATER

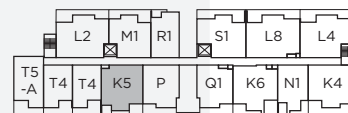
Downtown Living in the Heart of Maple Ridge



4TH - 6TH FLOORS



3RD FLOOR



2ND FLOOR



NORTH

PLAN K5 2 BED, 2 BATH 1,050 SF

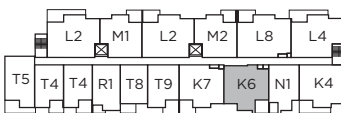
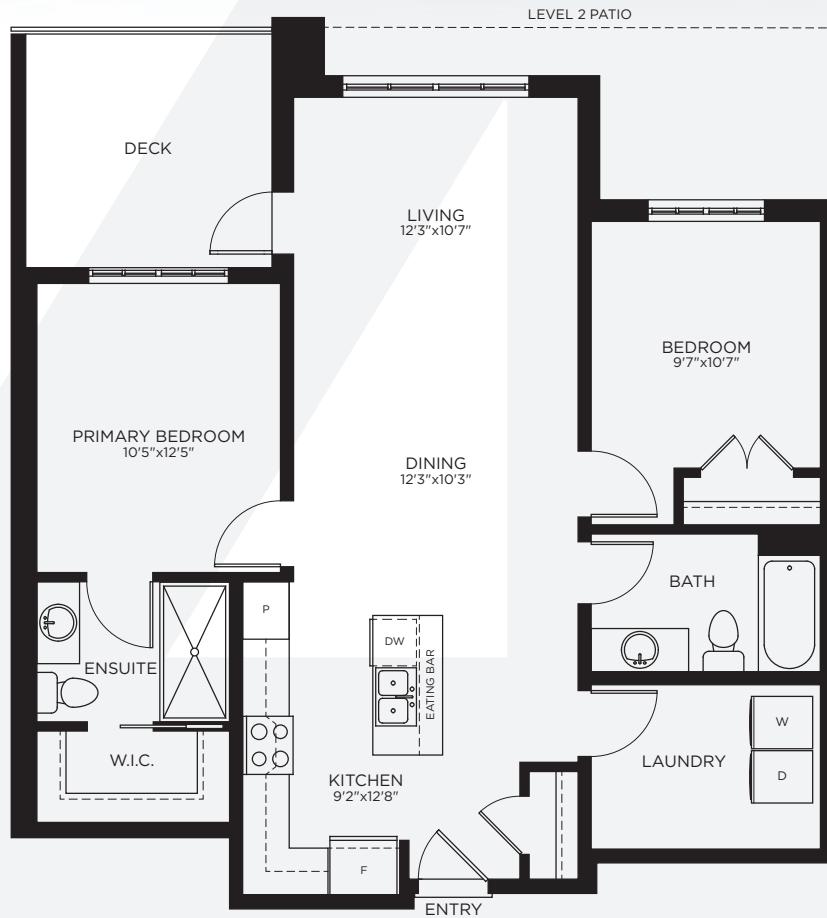


In our continuing effort to improve and maintain the high standards of Brickwater, the developer reserves the right to modify or change plans, specifications, features and prices without notice. Dimensions and sizes are approximate and are based on architectural measurements. E&OE.

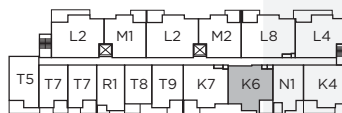


BRICKWATER

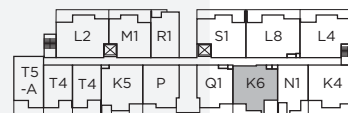
Downtown Living in the Heart of Maple Ridge



4TH - 6TH FLOORS



3RD FLOOR



2ND FLOOR



NORTH

PLAN K6 2 BED, 2 BATH 1,033 SF

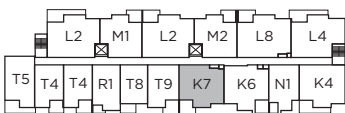
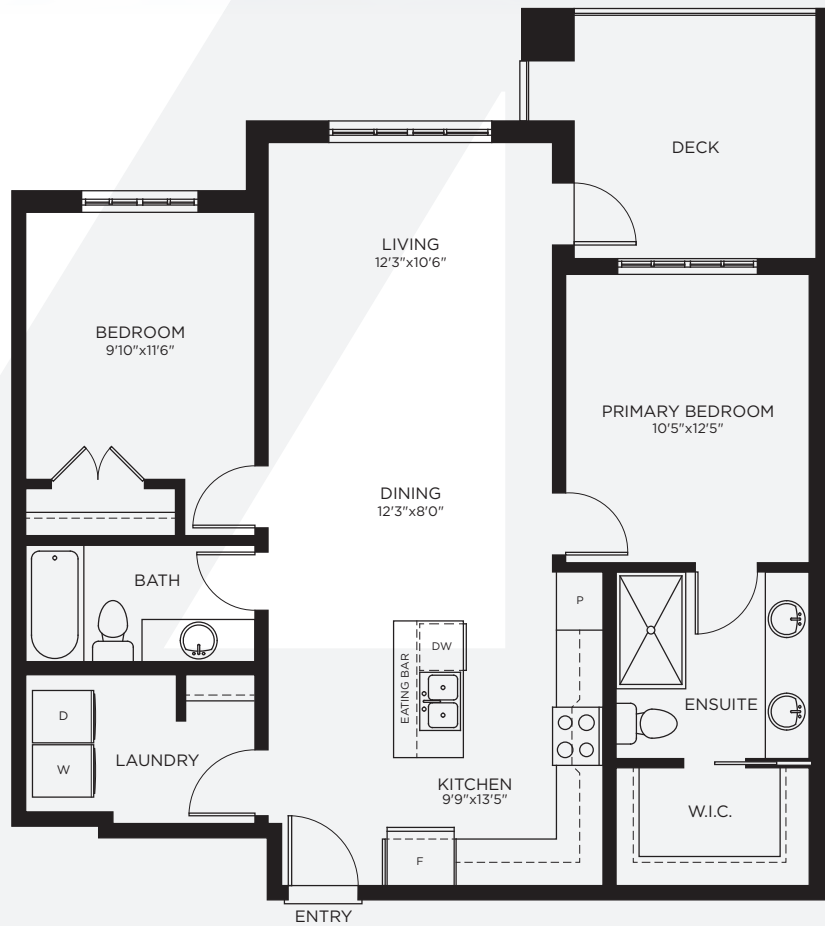


In our continuing effort to improve and maintain the high standards of Brickwater, the developer reserves the right to modify or change plans, specifications, features and prices without notice. Dimensions and sizes are approximate and are based on architectural measurements. E&OE.

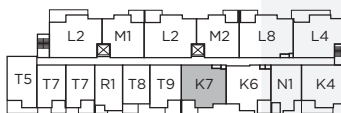


BRICKWATER

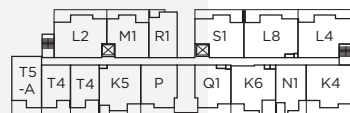
Downtown Living in the Heart of Maple Ridge



4TH - 6TH FLOORS



3RD FLOOR



2ND FLOOR



NORTH

PLAN K7 2 BED, 2 BATH 1,023 SF

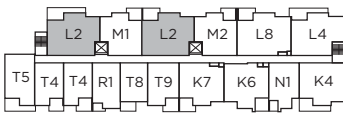
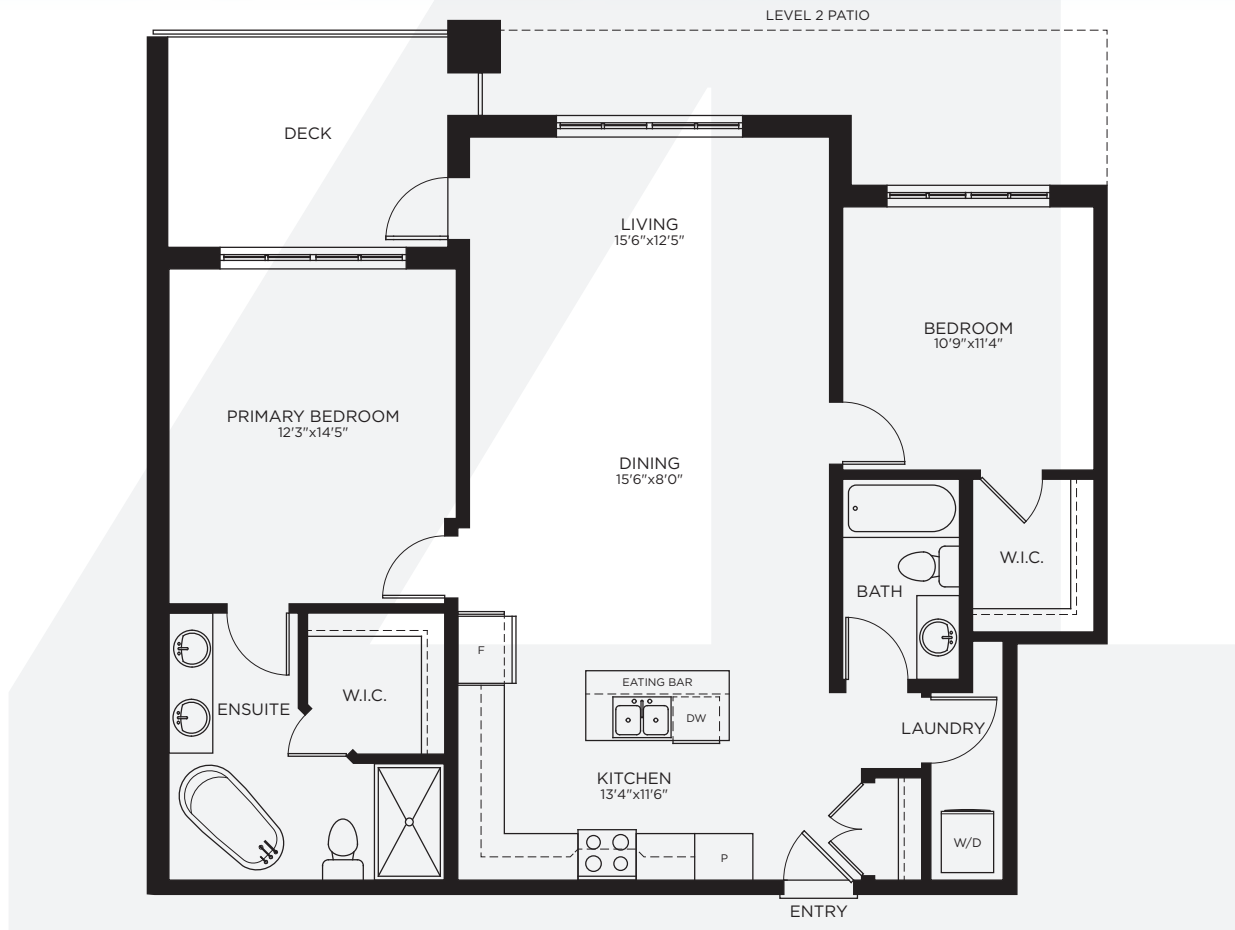


In our continuing effort to improve and maintain the high standards of Brickwater, the developer reserves the right to modify or change plans, specifications, features and prices without notice. Dimensions and sizes are approximate and are based on architectural measurements. E&OE.

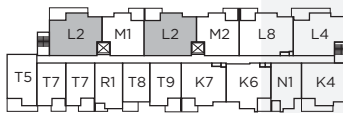


BRICKWATER

Downtown Living in the Heart of Maple Ridge



4TH - 6TH FLOORS



3RD FLOOR



2ND FLOOR



NORTH

PLAN L2 2 BED, 2 BATH 1,200 SF

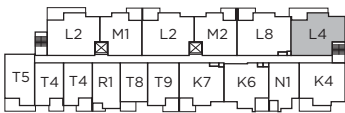
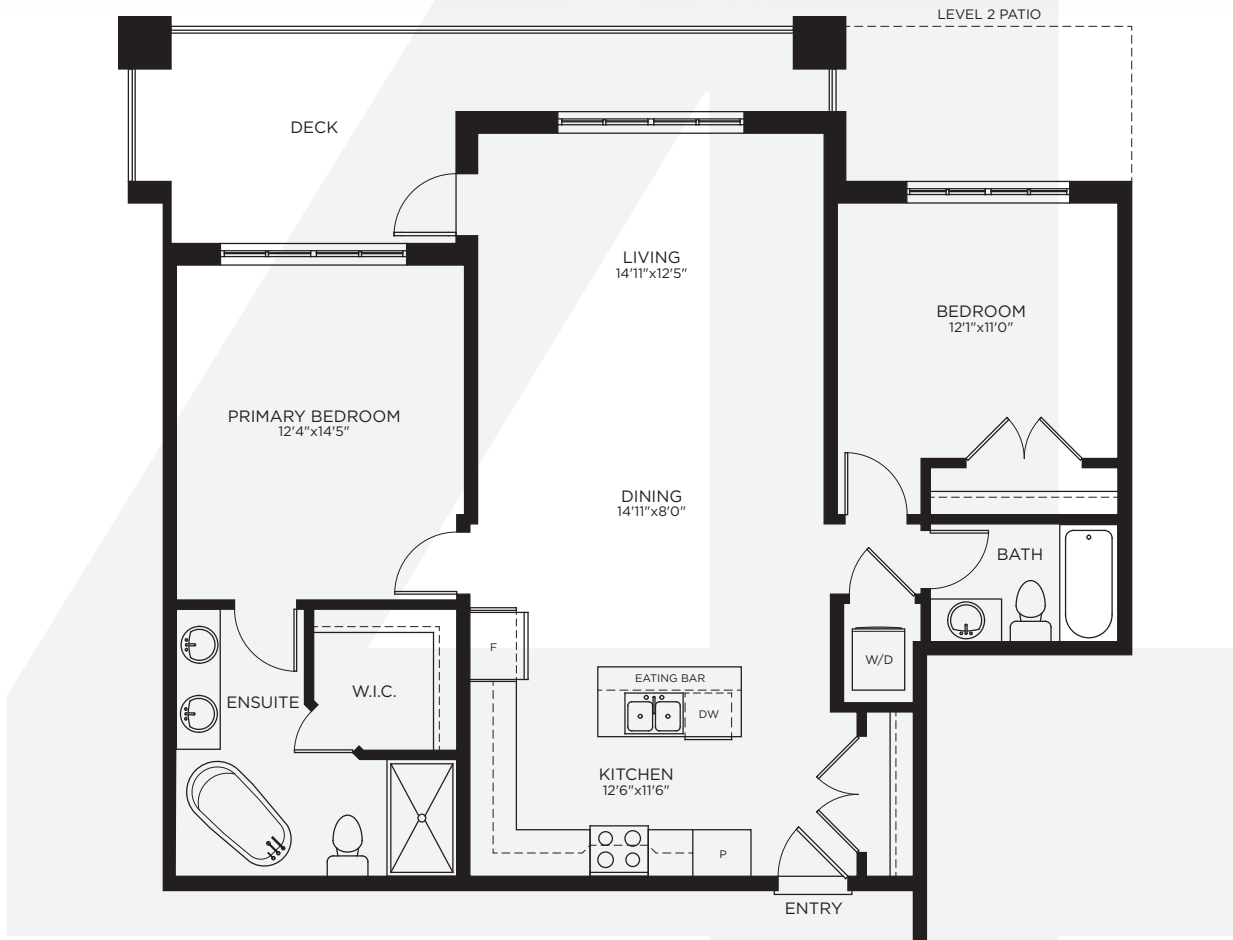


In our continuing effort to improve and maintain the high standards of Brickwater, the developer reserves the right to modify or change plans, specifications, features and prices without notice. Dimensions and sizes are approximate and are based on architectural measurements. E&OE.

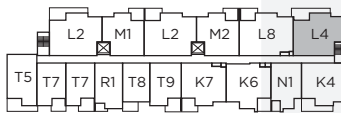


BRICKWATER

Downtown Living in the Heart of Maple Ridge



4TH - 6TH FLOORS



3RD FLOOR



2ND FLOOR



NORTH

PLAN L4 2 BED, 2 BATH 1,172 SF

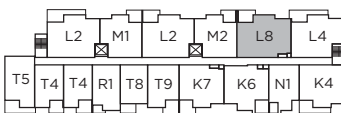
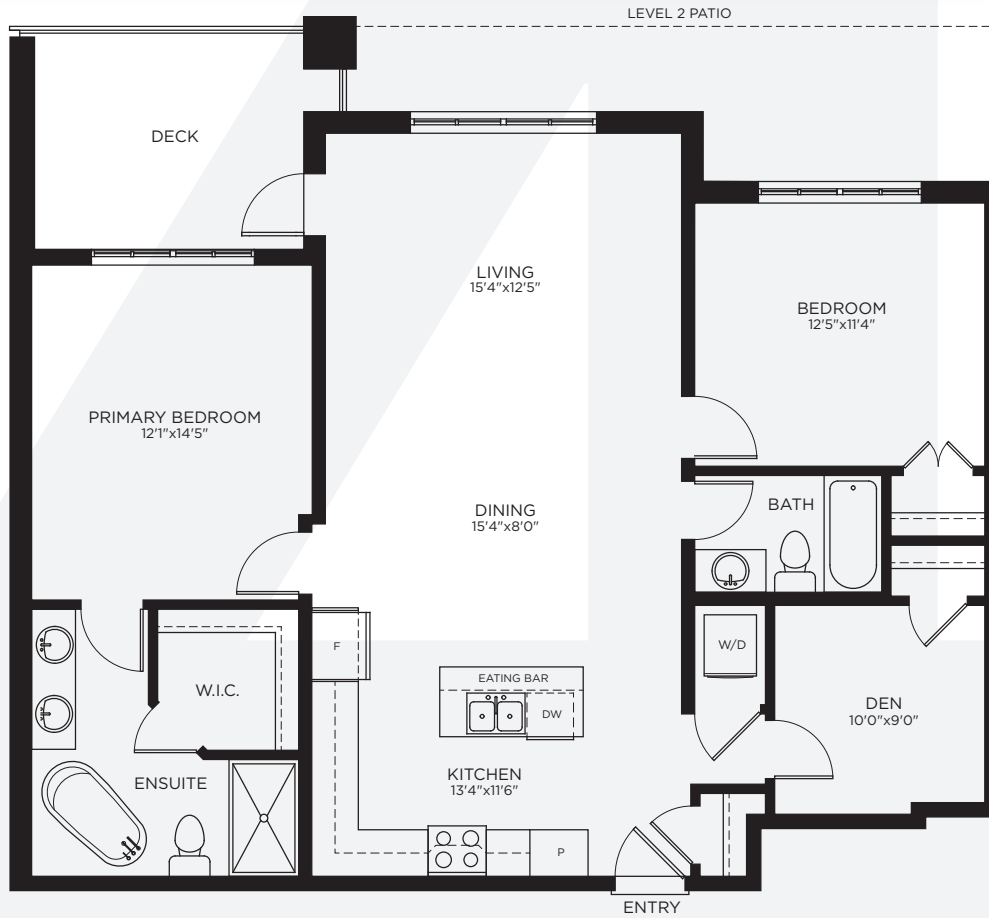


In our continuing effort to improve and maintain the high standards of Brickwater, the developer reserves the right to modify or change plans, specifications, features and prices without notice. Dimensions and sizes are approximate and are based on architectural measurements. E&OE.

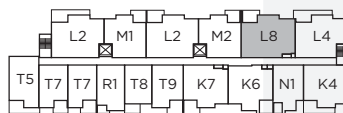


BRICKWATER

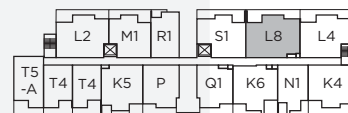
Downtown Living in the Heart of Maple Ridge



4TH - 6TH FLOORS



3RD FLOOR



2ND FLOOR



PLAN L8

2 BED + DEN, 2 BATH 1,249 SF

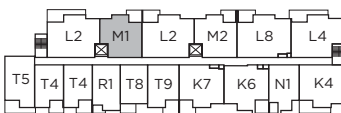
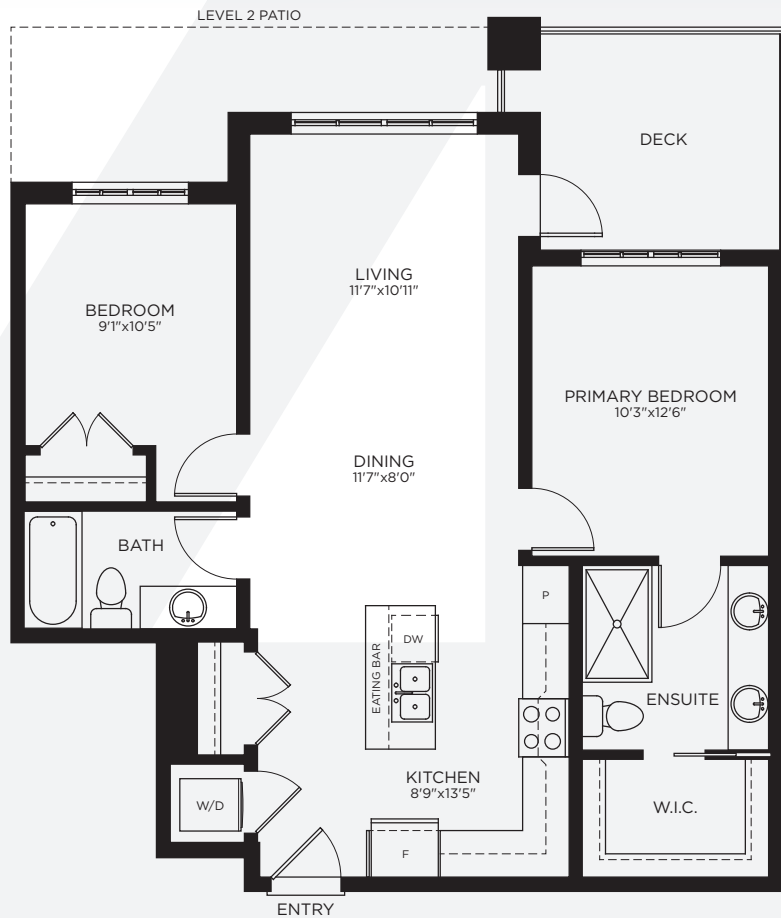


In our continuing effort to improve and maintain the high standards of Brickwater, the developer reserves the right to modify or change plans, specifications, features and prices without notice. Dimensions and sizes are approximate and are based on architectural measurements. E&OE.

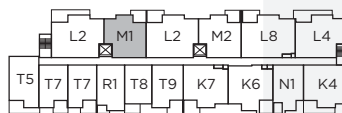


BRICKWATER

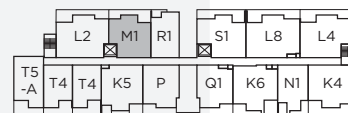
Downtown Living in the Heart of Maple Ridge



4TH - 6TH FLOORS



3RD FLOOR



2ND FLOOR



NORTH

PLAN M1 2 BED, 2 BATH 926 SF

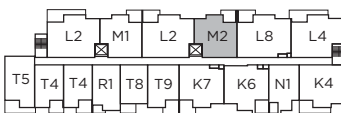
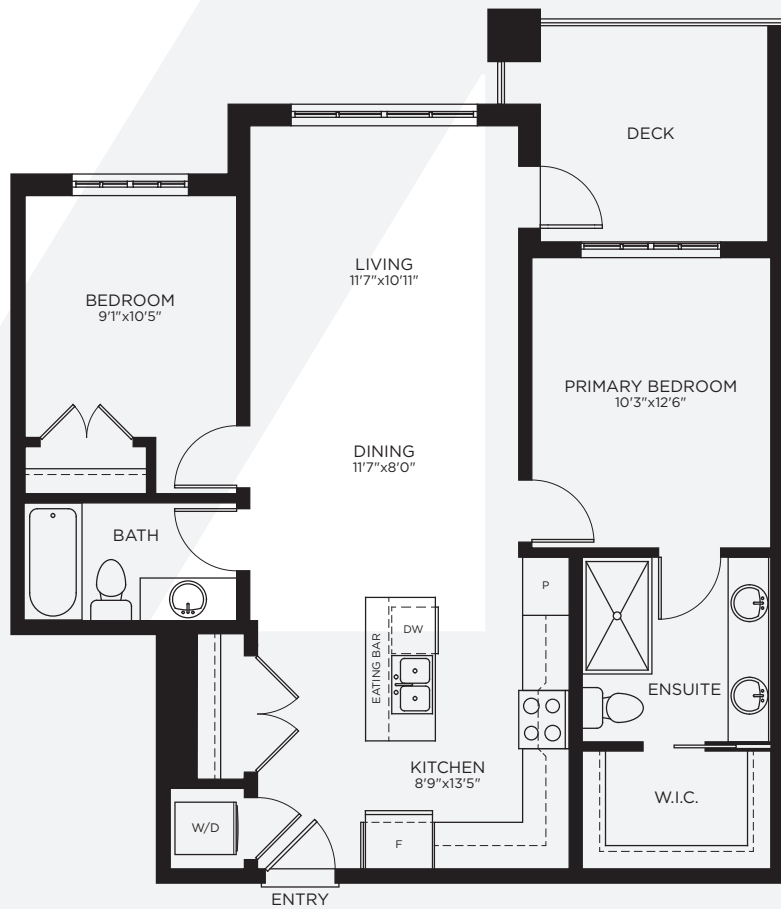


In our continuing effort to improve and maintain the high standards of Brickwater, the developer reserves the right to modify or change plans, specifications, features and prices without notice. Dimensions and sizes are approximate and are based on architectural measurements. E&OE.

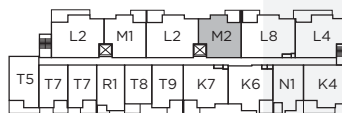


BRICKWATER

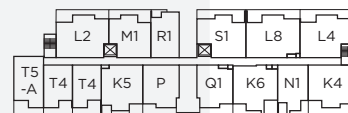
Downtown Living in the Heart of Maple Ridge



4TH - 6TH FLOORS



3RD FLOOR



2ND FLOOR



PLAN M2 2 BED, 2 BATH 929 SF

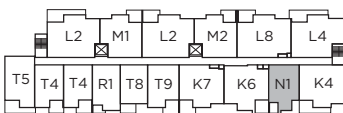
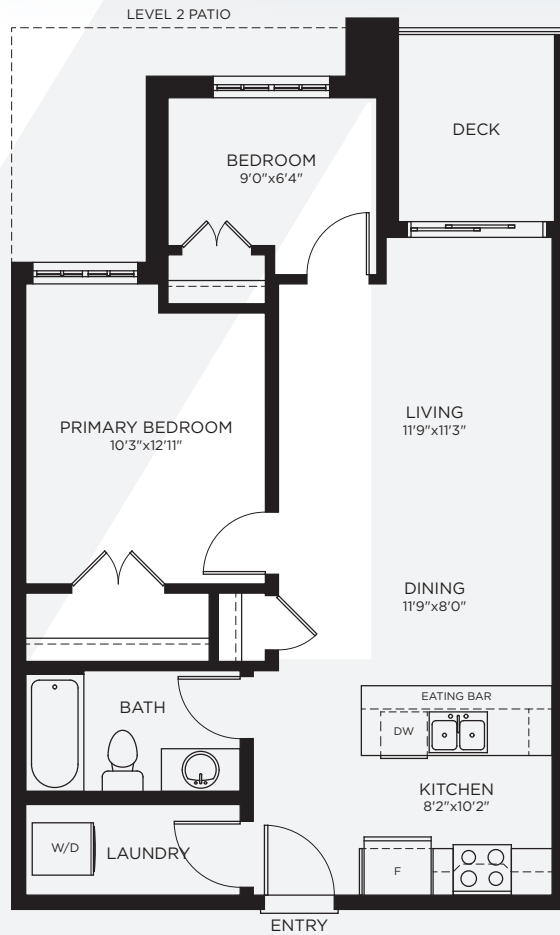


In our continuing effort to improve and maintain the high standards of Brickwater, the developer reserves the right to modify or change plans, specifications, features and prices without notice. Dimensions and sizes are approximate and are based on architectural measurements. E&OE.

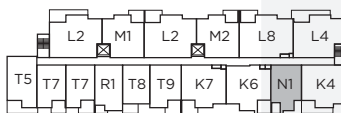


BRICKWATER

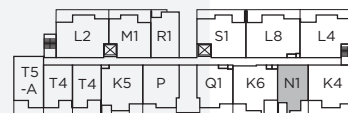
Downtown Living in the Heart of Maple Ridge



4TH - 6TH FLOORS



3RD FLOOR



2ND FLOOR



NORTH

PLAN N1 2 BED, 1 BATH 747 SF

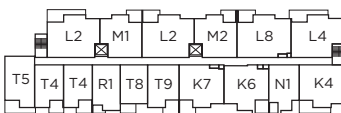
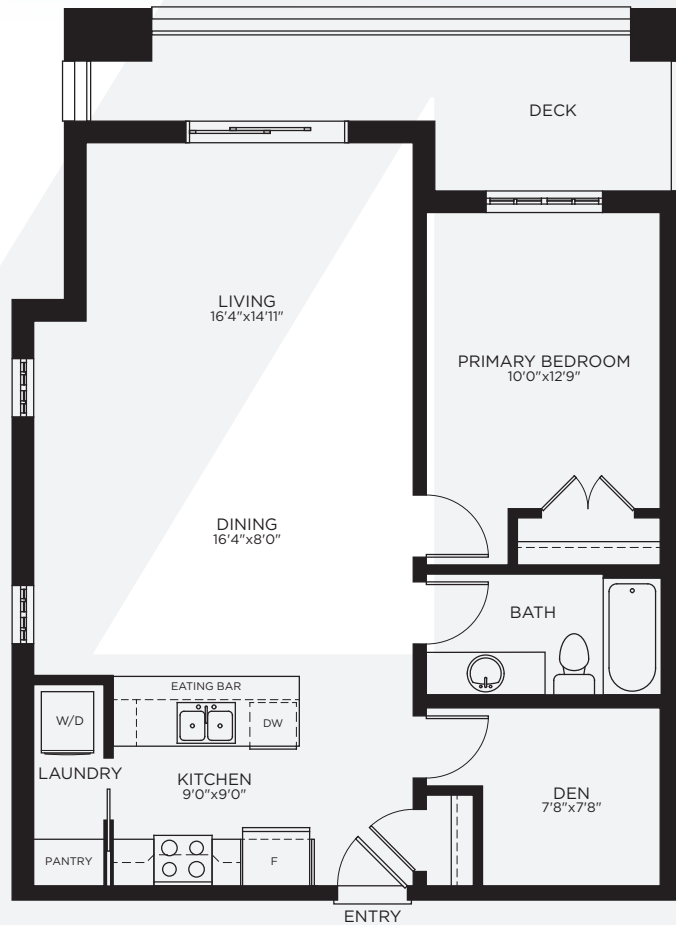


In our continuing effort to improve and maintain the high standards of Brickwater, the developer reserves the right to modify or change plans, specifications, features and prices without notice. Dimensions and sizes are approximate and are based on architectural measurements. E&OE.

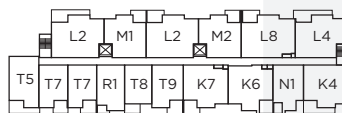


BRICKWATER

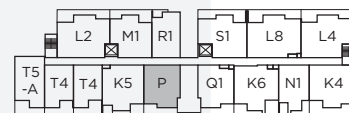
Downtown Living in the Heart of Maple Ridge



4TH - 6TH FLOORS



3RD FLOOR



2ND FLOOR



NORTH

PLAN P

1 BED + DEN, 1 BATH 878 SF

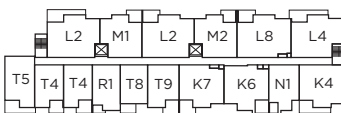


In our continuing effort to improve and maintain the high standards of Brickwater, the developer reserves the right to modify or change plans, specifications, features and prices without notice. Dimensions and sizes are approximate and are based on architectural measurements. E&OE.

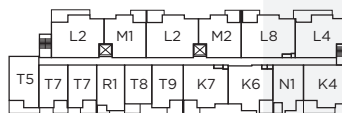


BRICKWATER

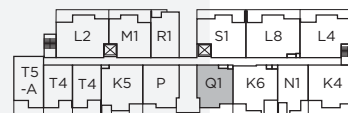
Downtown Living in the Heart of Maple Ridge



4TH - 6TH FLOORS



3RD FLOOR



2ND FLOOR



NORTH

PLAN Q1 1 BED, 1 BATH 804 SF

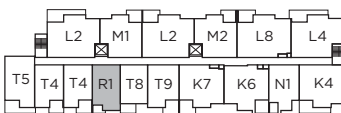
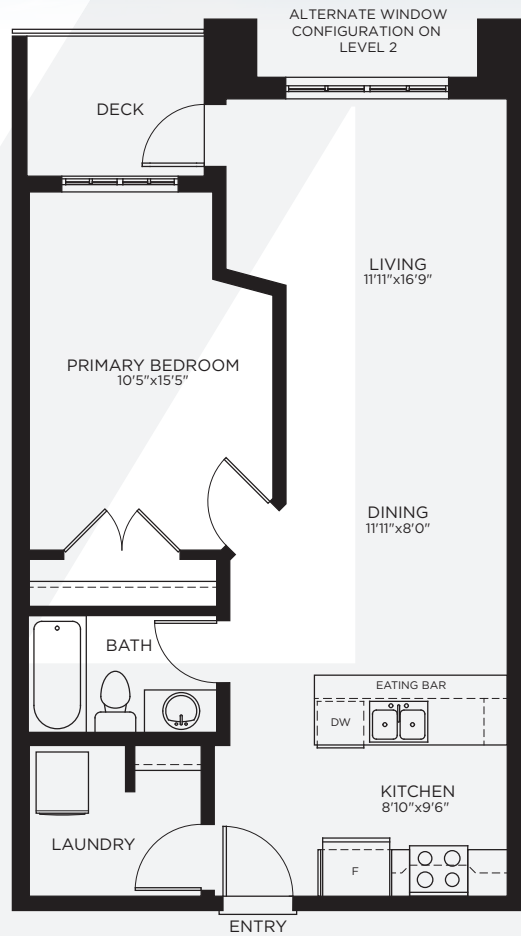


In our continuing effort to improve and maintain the high standards of Brickwater, the developer reserves the right to modify or change plans, specifications, features and prices without notice. Dimensions and sizes are approximate and are based on architectural measurements. E&OE.

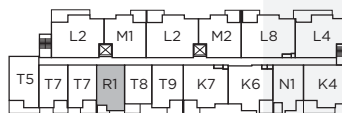


BRICKWATER

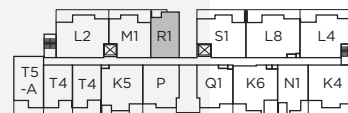
Downtown Living in the Heart of Maple Ridge



4TH - 6TH FLOORS



3RD FLOOR



2ND FLOOR



NORTH

PLAN R1 1 BED, 1 BATH 735 SF

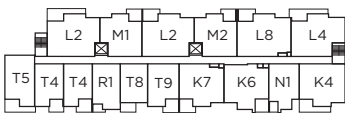
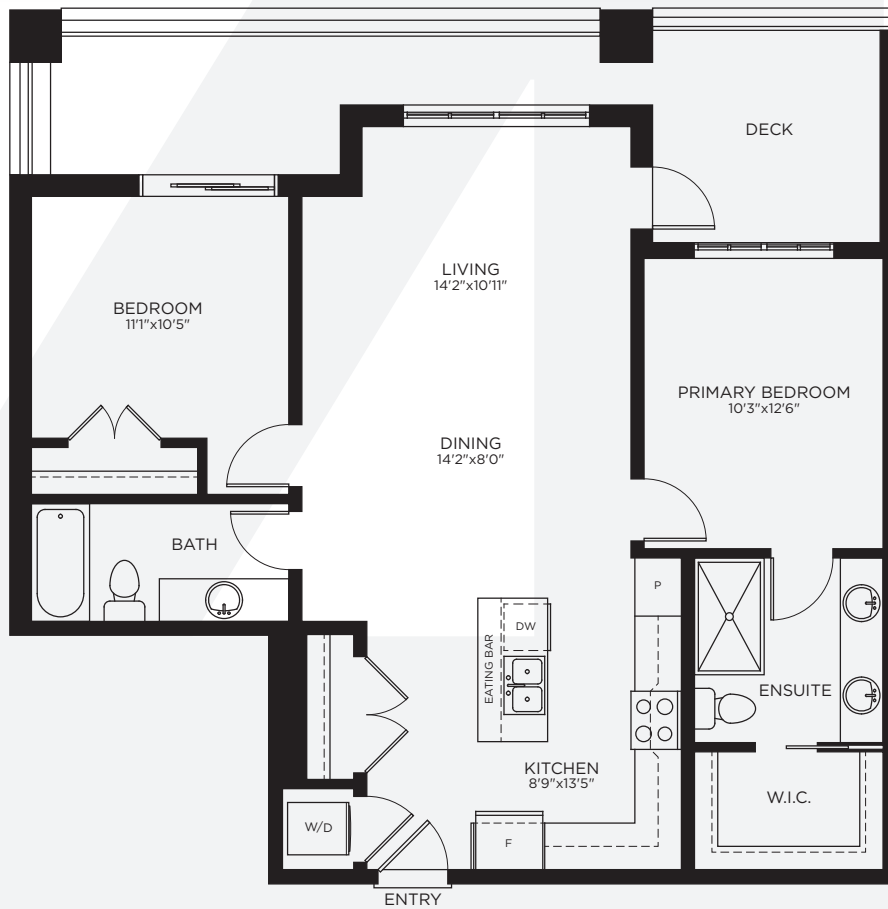


In our continuing effort to improve and maintain the high standards of Brickwater, the developer reserves the right to modify or change plans, specifications, features and prices without notice. Dimensions and sizes are approximate and are based on architectural measurements. E&OE.

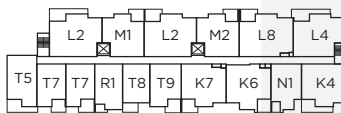


BRICKWATER

Downtown Living in the Heart of Maple Ridge



4TH - 6TH FLOORS



3RD FLOOR



2ND FLOOR



PLAN S1 2 BED, 2 BATH 1,017 SF

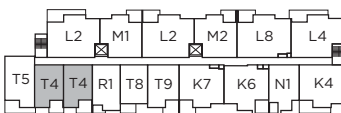
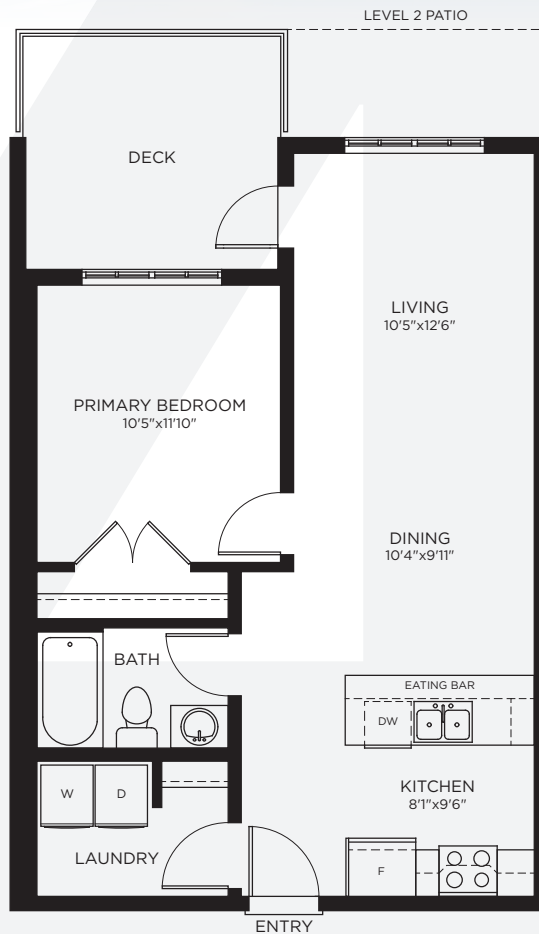


In our continuing effort to improve and maintain the high standards of Brickwater, the developer reserves the right to modify or change plans, specifications, features and prices without notice. Dimensions and sizes are approximate and are based on architectural measurements. E&OE.

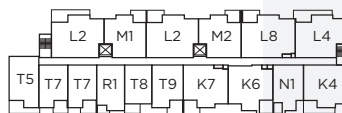


BRICKWATER

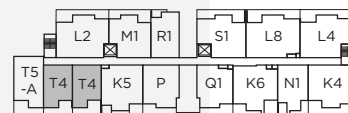
Downtown Living in the Heart of Maple Ridge



4TH - 6TH FLOORS



3RD FLOOR



2ND FLOOR



NORTH

PLAN T4 1 BED, 1 BATH 682 SF

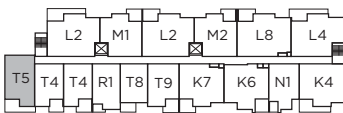
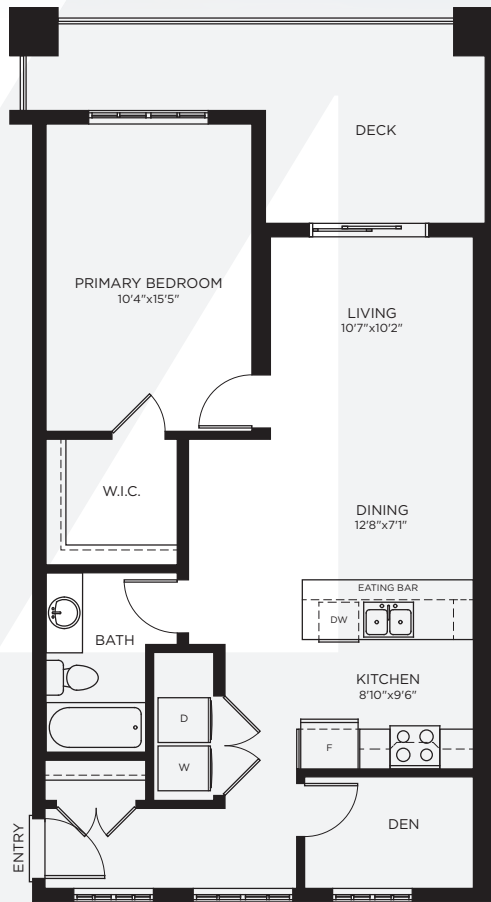


In our continuing effort to improve and maintain the high standards of Brickwater, the developer reserves the right to modify or change plans, specifications, features and prices without notice. Dimensions and sizes are approximate and are based on architectural measurements. E&OE.

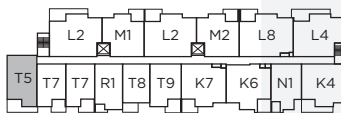


BRICKWATER

Downtown Living in the Heart of Maple Ridge



4TH - 6TH FLOORS



3RD FLOOR



2ND FLOOR



PLAN T5

1 BED + DEN, 1 BATH 829 SF

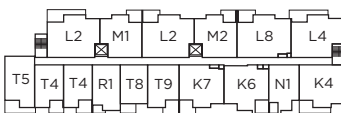
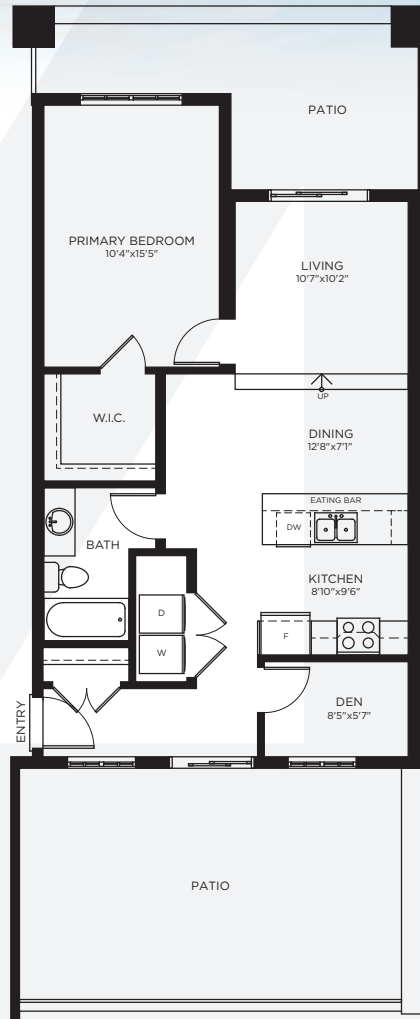


In our continuing effort to improve and maintain the high standards of Brickwater, the developer reserves the right to modify or change plans, specifications, features and prices without notice. Dimensions and sizes are approximate and are based on architectural measurements. E&OE.

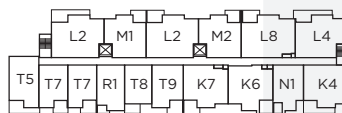


BRICKWATER

Downtown Living in the Heart of Maple Ridge



4TH - 6TH FLOORS



3RD FLOOR



2ND FLOOR



NORTH

PLAN T5-A

1 BED + DEN, 1 BATH 829 SF

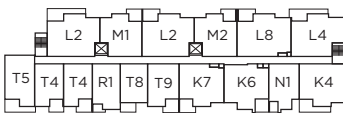
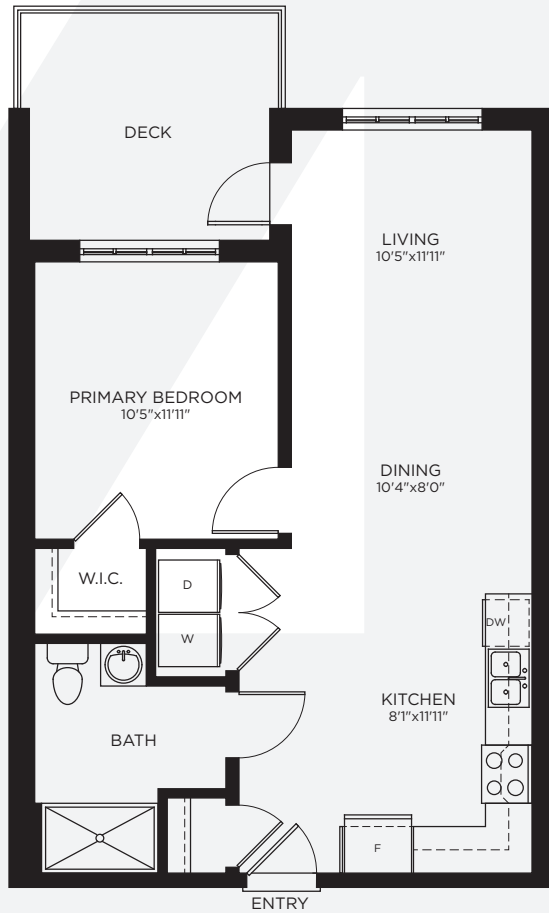


In our continuing effort to improve and maintain the high standards of Brickwater, the developer reserves the right to modify or change plans, specifications, features and prices without notice. Dimensions and sizes are approximate and are based on architectural measurements. E&OE.

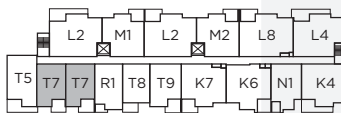


BRICKWATER

Downtown Living in the Heart of Maple Ridge



4TH - 6TH FLOORS



3RD FLOOR



2ND FLOOR



PLAN T7 1 BED, 1 BATH 682 SF

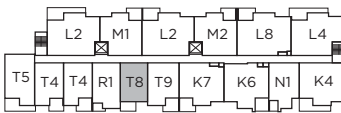
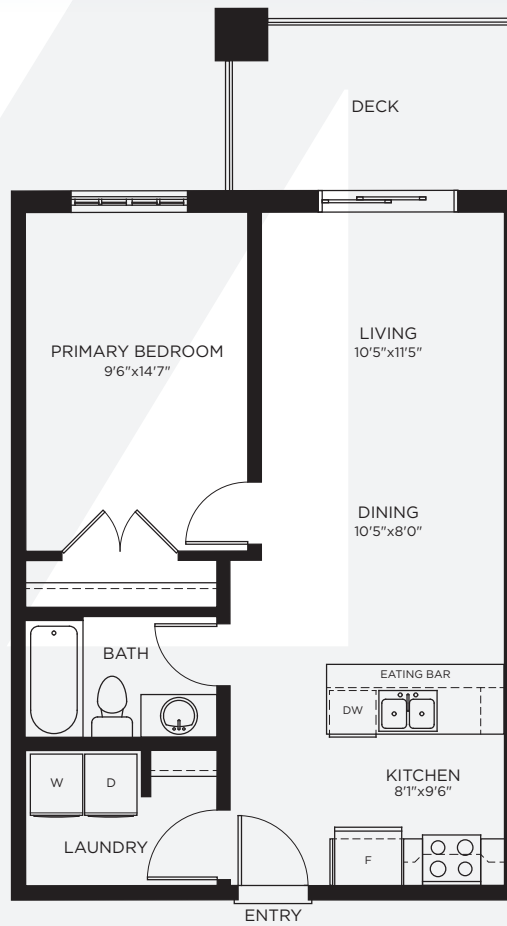


In our continuing effort to improve and maintain the high standards of Brickwater, the developer reserves the right to modify or change plans, specifications, features and prices without notice. Dimensions and sizes are approximate and are based on architectural measurements. E&OE.

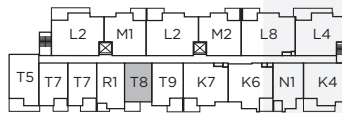


BRICKWATER

Downtown Living in the Heart of Maple Ridge



4TH - 6TH FLOORS



3RD FLOOR



2ND FLOOR



PLAN T8 1 BED, 1 BATH 653 SF

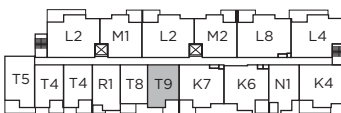
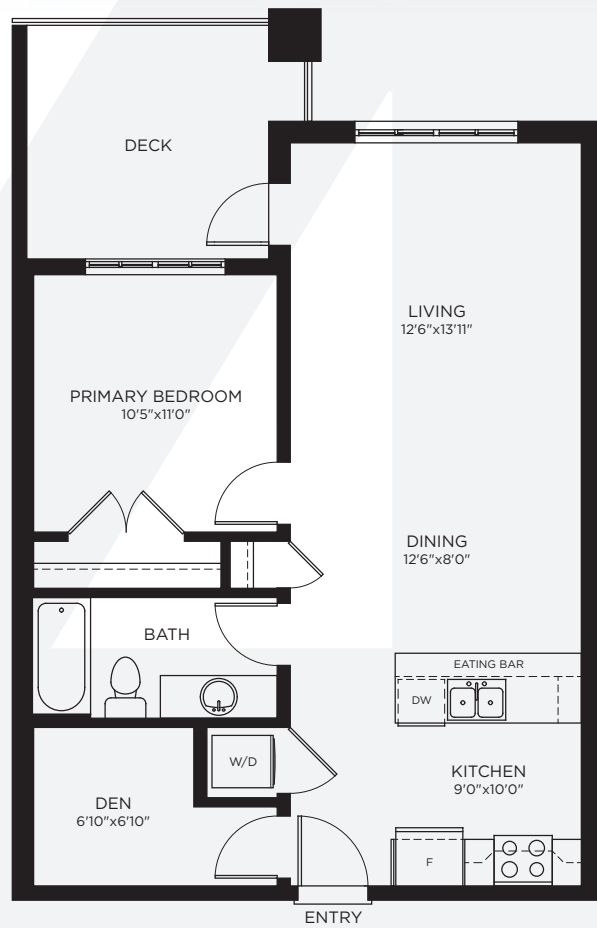


In our continuing effort to improve and maintain the high standards of Brickwater, the developer reserves the right to modify or change plans, specifications, features and prices without notice. Dimensions and sizes are approximate and are based on architectural measurements. E&OE.

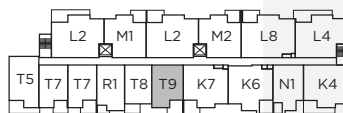


BRICKWATER

Downtown Living in the Heart of Maple Ridge



4TH - 6TH FLOORS



3RD FLOOR



2ND FLOOR



NORTH

PLAN T9

1 BED + DEN, 1 BATH 754 SF

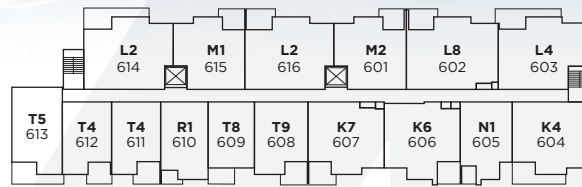


In our continuing effort to improve and maintain the high standards of Brickwater, the developer reserves the right to modify or change plans, specifications, features and prices without notice. Dimensions and sizes are approximate and are based on architectural measurements. E&OE.

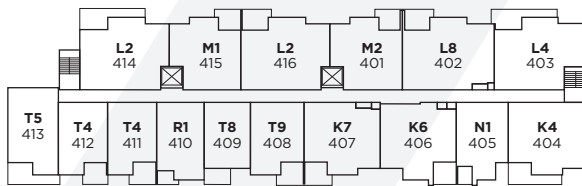


BRICKWATER

Downtown Living in the Heart of Maple Ridge



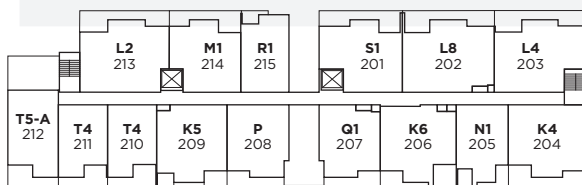
6th Floor



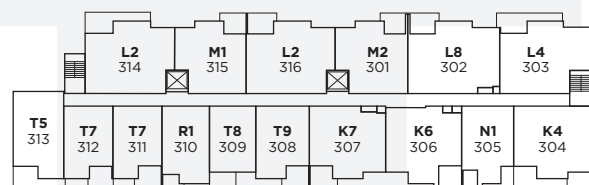
4th Floor



5th Floor



2nd Floor



3rd Floor

FLOOR PLATES



In our continuing effort to improve and maintain the high standards of Brickwater, the developer reserves the right to modify or change plans, specifications, features and prices without notice. Dimensions and sizes are approximate and are based on architectural measurements. E&OE.

